

# Demaq: A Foundation for Declarative XML Message Processing

Alexander Böhm      Carl-Christian Kanne      Guido Moerkotte

Department of Mathematics and Computer Science, University of Mannheim, Germany

*alex|cc|moer*@pi3.informatik.uni-mannheim.de

## ABSTRACT

This paper gives an overview of Demaq, an XML message processing system operating on the foundation of transactional XML message queues. We focus on the syntax and semantics of its fully declarative, rule-based application language and demonstrate our message-based programming paradigm in the context of a case study. Further, we discuss optimization opportunities for executing Demaq programs.

## 1. INTRODUCTION

The Web is rapidly developing from a one-way medium into an active distributed system, where the participating nodes asynchronously communicate via XML messages. Examples for "Active Web" protocols include event notification using RSS/Atom feeds [27], business process automation using Web Services [3, 21], and even new end-user interface architectures such as AJAX [18]. Industry sectors as diverse as securities trading [25] and multi-media news distribution [12] have successfully introduced XML messaging as the foundation of their processes.

Today's systems usually implement these protocols as an additional tier on top of existing middleware solutions [2], further aggravating the problem of complexity and poor integration that already plagues these systems [30]: Typically, the actual business processes are specified using imperative, high-level languages such as Java, C# or C++. An incoming message travels through the various layers: The XML body of the message is transformed into the middleware's representation, again transformed into the programming language's representation, with further transformations thrown in as other components such as relational DBMSs are accessed. Delivering a result requires a reverse traversal of this "transformation chain". This not only hurts performance, but also reduces developer productivity because each layer requires at least some separate design and coding that is not related to the actual application domain. Asynchronous operation and dependability requirements add more dependencies and complexity. The interaction of various configu-

ration options and code fragments is difficult to understand, optimize, and maintain.

The "Demaq" (DEclarative Messaging And Queuing) project described here investigates an alternative approach for the specification and implementation of such systems. Our work is based on a simple model: Essentially, the processes in the whole network as well as the processes on the individual nodes can be represented as a set of XML message queues and a set of rules for message exchange between these queues. The behavior of any node (or group of nodes) can be completely specified by enumerating its queues and associated rules.

The core idea of Demaq is to use a fully declarative, executable rule language for specification and implementation of Active Web nodes. This allows to move the responsibility for implementation details from the programmer to the processing system. This increases productivity if the typical asynchronous "dequeue-process-react" processing model for message-driven applications becomes part of the language semantics. Declarativity also facilitates data independence, which in the case of message processing means that aspects such as message persistence and recovery, message retention, streamed or materialized representation, or transport protocols are transparent to the programmer unless their control is explicitly desired. These degrees of freedom can be used by the processing system to automatically optimize the execution of the application. Last but not least, declarativity simplifies reasoning about the properties of the system [13], both on the level of individual nodes and whole systems.

We want to answer the question whether such a fully declarative language for XML message processing is viable from a systems perspective. Our Demaq server realizes an Active Web node by executing a declarative program. It leverages database technology for message processing by using XML data stores for reliable, transactional XML message queues, and declarative XML query processing technology for efficient rule evaluation. This has never been done before: Existing approaches in this problem space either (1) work on network layers below the application [24], (2) focus on relational queue persistence [15, 19] and do not provide a control language that natively supports XML, making the implementation of above-mentioned protocols a pain, (3) are partly imperative (e.g. [1, 3, 11, 17, 34]), making an automatic optimization difficult, or (4) only consider isolated subproblems, omitting a specification of a complete system architecture [5, 9, 28].

Our main contribution is the fully declarative, executable language Demaq for XML message processing. It is based

This article is published under a Creative Commons License Agreement (<http://creativecommons.org/licenses/by/2.5/>).

You may copy, distribute, display, and perform the work, make derivative works and make commercial use of the work, but you must attribute the work to the author and CIDR 2007.

3<sup>rd</sup> Biennial Conference on Innovative Data Systems Research (CIDR) January 7-10, 2007, Asilomar, California, USA.

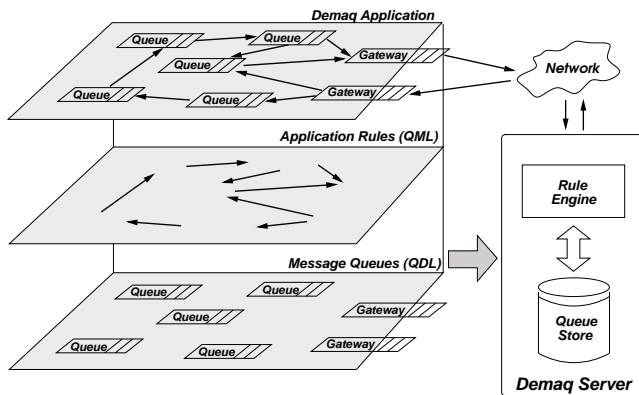


Figure 1: Structure of a Demaq application

on existing and emerging standards such as XML Schema [31], XQuery [8], and the XQuery Update Facility [10]. The Demaq language has only a few primitives, which can be divided into two sublanguages:

**A queue definition language** for the specification of

- queues for representing local state,
- queues for the communication with remote nodes,
- virtual queues, called *slices*, which group messages according to user-defined criteria, and
- message retention policies.

**A rule language** for message flow control, which

- is "closed", i.e. describes the system's reaction to messages exclusively in terms of new messages,
- extends the XQuery Update language [10] with queuing primitives, and
- has simple semantics based on an execution model that suggests a straightforward implementation, but leaves room for automatic optimization.

We complement the language description with many examples and a discussion of our ongoing implementation, which shows

- why our language can be executed in a reliable, efficient and scalable way,
- how existing database technology can be leveraged for message processing (exemplified by our native XML data store Natix [16]),
- where the opportunities for further research are.

Fig. 1 visualizes a Demaq application (top pane). The figure also illustrates the outline of the paper: An application consists of queue definitions specified using the Queue Definition Language (QDL), including communication queues to the outside world (bottom pane and Sec. 2), and Queue Manipulation Language (QML) application rules for message flow (middle pane and Sec. 3). Demaq applications are executed by the Demaq server (shown on the right and discussed in Sec. 4).

## 2. MESSAGES AND QUEUES

Demaq applications are based on an infrastructure of physical and logical structures defined by the Queue Definition Language (QDL). Queues provide physical message containers that decouple message insertion from processing and provide fast message storage and retrieval operations as well as support for reliability and communication (Sec. 2.1). We also introduce the notion of *slices*, which are used for creating logical groups of related messages. We use slices to simplify application development and to specify how long messages need to be retained physically before they can be deleted (Sec. 2.3).

In the QDL definitions in this section, the names of structures are always qualified XML names. For brevity, we assume the declaration of a default namespace and omit namespace prefixes.

### 2.1 Queues

To provide application programs with high performance communication facilities, Demaq incorporates data structures for efficient, asynchronous messaging operations. For this purpose, message queues have proven their usefulness in a vast number of messaging and integration solutions [2]. They allow for fast message handling operations and directly support the asynchronous processing model of Active Web applications. Consequently, queue data structures are used for all message handling operations in Demaq.

Apart from the simplest solutions, distributed applications have to keep track of their execution state, for example to reflect their current progress with respect to the business process they implement. Usually, large parts of the state information of an application program is derived from the messages sent to and received from remote communication partners.

One possibility to represent this information is to associate a corresponding runtime context to each application instance. This approach is used by BPEL [3] and XL [17], where instance-local variables can be used for storing state information. Contexts that include these variable bindings have to be kept for each active process instance, which leads to scalability issues if the number of processes is large. Some execution systems try to overcome this problem by serializing data (**dehydration**) of "stale" instances. For example, the Oracle BPEL Process Manager stores application contexts in a relational database system (**dehydration store**) and reacquires them when processing continues [7].

Demaq chooses another approach by requiring all data to be available as XML messages, each of which resides in exactly one queue. As a result, messages received from remote communication endpoints and internal state information are handled in a uniform manner, thus simplifying application development. Furthermore, by modeling the state of processes as regular data, we can leverage declarative query processing to obtain the relevant data instead of constantly loading, manipulating, and saving opaque, monolithic runtime contexts.

For reasons of uniformity, system services providing remote communication facilities and timers are also modeled as message queues. This greatly reduces the number of primitives in the language and makes it easier to understand and use.

### 2.1.1 Basic Queues

*Basic queues* provide local message storage facilities. Every queue has a unique name and mode of operation, specifying whether its content has to be stored persistently or can be transient. The **persistent** queue mode guarantees that in case of a system crash, messages are not lost, which is important for business processes. **Transient** queues may be used in those parts of an application that tolerate data loss or can compensate for it. The following statement creates a persistent, local queue.

```
create queue finance kind basic mode persistent
```

For all queues, there may also be additional, optional parameters, e.g. for specifying a schema all queued messages have to conform to. Other parameters include a priority level that determines the relative importance of processing messages from this queue compared to other queues.

### 2.1.2 Gateway Queues

Interaction with remote transport endpoints is a frequent operation for distributed applications such as Web Services. To provide application programs with a convenient way for remote communication, *gateway queues* are used to perform messaging operations. They represent local links to remote endpoints. Messages that are placed into outgoing gateway queues are sent, while incoming gateway queues contain messages that have been received from other nodes. Message properties (see Sec. 2.2) are used to specify recipients and other communication parameters.

The following example creates an outgoing gateway queue to communicate with an external supplier's Web Service. In addition to the queue name and the kind, we import the supplier's interface definition from a WSDL file and associate some Web Service extensions (WS-ReliableMessaging [6] and WS-Security [4]) with the queue.

```
create queue supplier kind outgoingGateway mode persistent
  interface supplier.wsdl port CapacityRequestPort
  using WS-ReliableMessaging policy wsrmopol.xml
  using WS-Security policy wssecpol.xml
```

Note that in order to use the reliable messaging extensions which support reliable sending across system failures, the created queue must be persistent.

From the point of view of the application rules (see below), there is no difference between gateway queues and regular queues. This also facilitates the distribution of applications over several nodes by replacing local queues with pairs of gateway queues that connect two sites.

By introducing gateway queues, all network-related operations can be implemented by a communication subsystem providing a queue-based interface. Sending a message to a remote transport endpoint can be done by inserting it into a corresponding gateway queue. Unfortunately, distributed architectures such as Web Service applications involve plenty of heterogeneous, independent clients and software layers, each of them being a potential source of errors [33]. Thus, communication aspects and network failure notifications cannot be hidden behind a queue-based messaging interface. Instead, application programs have to become aware of problems encountered by the communication subsystem and implement corresponding error handlers. We postpone an overview of Demaq's error handling strategy until Sec. 3.6.

### 2.1.3 Time-Based Queues

An important aspect of automated business processes is time. This is true, for example, in situations where the absence of action should cause messages to be sent, e.g. for notifications or reminders. Similar to network communication, we want to allow timer events without complicating the rule language. Thus, we model time-based events as message queues. An example of such time-based queues are *echo queues*, which enqueue any message sent to them into some target queue after a timeout has expired. Both the timeout and target queue are specified as message properties.

The following example creates a persistent echo queue.

```
create queue echoQueue kind echo mode persistent
```

## 2.2 Message Properties

Apart from their XML payload, incoming messages are associated with metadata properties such as their size and a message arrival timestamp. Another kind of metadata is transport protocol information, such as the initial sender address or connection handles. Connection handles support synchronous communication, where a response message must be correlated with an existing connection created by an incoming request. Metadata access has to be possible from application programs, e.g. if an acknowledgment message needs to include the arrival timestamp of the original message.

A straightforward solution for metadata representation is the semi-structured nature of the XML message format. We could encapsulate the application-specific XML payload in a metadata-carrying XML envelope, embedding all metadata information into the message bodies themselves. As a result, both payload and related metadata information were stored uniformly and could be easily accessed by application programs.

We have chosen a different approach in Demaq because a fully uniform treatment of message body and message metadata does not take into account that the access patterns for payload and metadata differ:

- Some metadata is maintained by the system and cannot be freely modified.
- Things like connection handles should automatically propagate with the messages.
- Some metadata may be computable from the message content.

Embedding metadata into the message bodies would put the burden of metadata management on the application developer, who would have to worry about which part of the messages are part of the application specific schema, which parts are automatically maintained by the system, which parts must be propagated to new messages, etc. For these reasons, we have included primitives for *property* management into Demaq. Properties are key/value pairs, with unique names and a typed, atomic value. They are determined during message creation and remain fixed over the message's lifetime. There are several ways to establish property values:

**Explicit** A property value may be explicitly specified when enqueueing a message (see Sec. 3.4).

**System** Certain properties are set by the system, such as the name of the rule that created a message, the timestamp at which a message was created, or the sender of a message for incoming gateway queues.

**Inherited** Properties may be *inherited*. A message whose creation was triggered by another message will have the same property values as the triggering message for all inherited properties.

**Computed** A property value may be computed using an XPath expression applied to the corresponding message.

As an example, we define a boolean property which may be used by messages in four different queues. It is automatically propagated from message to message if not explicitly set to a different value.

```
create property isVIPorder as xs:boolean inherited
queue crm, finance, legal, customer value false
```

We may also define properties that have different computed values based on which queue the message is inserted into, as in the example below. Here, "orderID" always takes the computed value and may not be set explicitly (keyword **fixed**). Note that the value expressions need not be constants, but may be path expressions which are evaluated against the message body. This mechanism can be used to give a name to common subexpressions in rules, similar to views in SQL.

```
create property orderID as xs:string fixed
queue order value //orderID
queue confirmation value /confirmedOrder/ID
```

## 2.3 Slicings

Queues represent the most important primitive to physically organize message storage. However, many applications have multiple, orthogonal criteria for categorizing messages, e.g. all messages belonging to a single business transaction, all messages received from a particular customer, all priority orders, etc. Typically, messages from several different queues may be part of the same logical group. This aspect is depicted in Fig. 2.3, showing four individual business transactions. Each transaction consists of correlated messages stored in three different, physical queues (requests, orders, confirmations).

Demaq supports a declarative specification of such logical groups in the form of "virtual" queues, called *slices*. Slices are similar to the concept of parameterized views [32] for relational databases. There, a parameterized view defines a family of views, specified by a query expression with a free variable, such that there is one view relation for each value of the parameter. Similarly, a *slicing* in Demaq defines a family of virtual queues, where each virtual queue consists of all the messages with the same value for a particular property (*slice key*). As rules can be attached to slices, this allows for elegant specification of a variety of typical design patterns.

- Slices are a more general form of the "correlation sets" in BPEL [3] and "conversations" in XL [17].
- Slices are also useful if the existence of more than one message is a prerequisite for generating a new message. For example, "joining" parallel control flows can be implemented by defining a slice, as demonstrated by the example in Sec. 3.5.1.

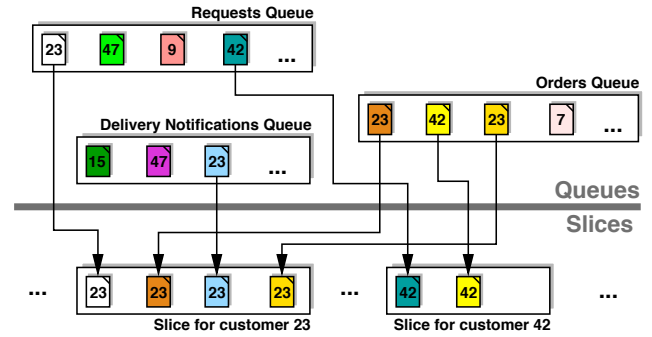


Figure 2: Slicing example (customer transactions)

- Whether or not a message is still required by some process may depend on other messages. Slices allow to group messages to specify retention policies (see Sec. 2.3.3).

In general, slices are user-defined *granularities of data* that are implied by the application domain. This not only allows to simplify application specification, but gives rise to many optimization opportunities: Despite their logical nature, slices can be physically stored to speed up message access, similar to indexes and materialized views. They also can be used as an additional locking granularity to increase concurrency. We will detail the semantics of slicings in this section and discuss implementation techniques in Sec. 4.

### 2.3.1 Slicing Definition

A slicing is created by specifying a unique name and the *slicing property*, which may be any property according to Sec. 2.2.

The property definition lists a number of queues on which the property is defined. Messages from these queues are partitioned into *slices* according to their property value. All messages that share the same value of the slicing property are part of the same slice. Each slice represents a "virtual queue" to which rules can be attached (see Sec. 3.5.1).

The property value of a slice is called the *slice key*. The use of property values as slice keys avoids extra language primitives and reflects the fact that the ways property values are defined nicely match the criteria according to which applications need to group messages: Slice keys sometimes need to be computed from the message (using **computed** property values). In other cases, the rule creating a message might want to specify the target slice by explicitly setting the slice key. Some messages should belong to the same slice as the message which caused their creation (**inherited** properties). The use of system properties such as connection handles enables the application to group all messages caused by one particular external message.

In the following example, we group all order and confirmation messages for the same orderID into a single slice. The slicing "orders" is defined on the property orderID introduced in Sec. 2.2.

```
create slicing orders on orderID
```

### 2.3.2 Slice Resets

Sometimes, slices have more than one "lifetime". For example, an application for a domain name registrar may have

a slicing based on the domain name to group all messages related to a particular domain name. If at some point a domain name changes owners, the application might want to avoid accessing messages related to the old owner when using the domain slice.

To indicate that an application is no longer interested in the content of a particular slice, slices can be "resetted", beginning a new lifetime of the slice. Only messages of the current lifetime are visible when accessing the slice. Slightly more formal, a slice  $s$  with a slicekey  $k$  contains all those messages that have a slicing property value of  $k$  and have been added after the last reset operation of  $s$ .

As slices represent logical groups of messages, resetting a slice does not necessarily mean the contained messages are physically deleted. We illustrate how the slicing concept is related to message retention in the following section.

### 2.3.3 Message Retention

In typical message processing systems, messages are dequeued, i.e. physically removed, from the queue once they have been processed. However, there are many reasons why messages need to be retained for a longer period of time. Examples include legal reasons, auditing, and tracing system behavior. In the Demaq model "everything is a message", and the state of running processes is often encoded in "old" messages scattered throughout the system. Hence, access to already processed messages is frequently required.

This is why Demaq is based on an append-only approach for message queues – messages are never modified after they have been created. However, we still need a mechanism for message removal because we cannot assume unlimited storage capacity. One straightforward solution is to allow for explicit deletion by the application program. This is the equivalent of manual memory management for conventional programming languages, which is a chronic source of errors and increases the complexity of development because dependable long-running processes like our Active Web applications need to be free of memory leaks or, in our case, "message leaks". Further, explicit deletion leaves no degrees of freedom for the run-time system to optimize execution, which is inconsistent with our desire for declarativity. In addition, it is often difficult for a single part of the application code to decide whether a message is not required any more. To illustrate this, consider a procurement application as a simple example for several independent retention criteria:

1. From the packaging department's point of view, it is sufficient to retain an order message until the order has been packed and picked up by a delivery service. Afterwards, the message can be safely deleted.
2. The corporate finance department requires the same order message to be retained to make sure that payments received from the customer can be correlated to the corresponding order message.
3. The operations research department requires all order messages to be kept until the end of the month when performing demand planning based on the most recent customer orders.

When using explicit message deletion primitives in this scenario, the multiple retention requirements cannot be easily combined. In particular, the order in which the three conditions for safe message deletion become true varies from order

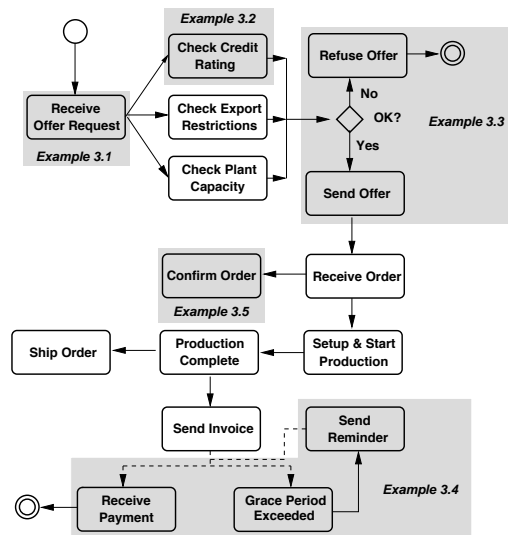


Figure 3: Procurement scenario workflow

to order. Thus, all modules would need to know about the message retention policy of the other parts of the application, making application maintenance more difficult.

Demaq uses a declarative approach to specify when messages are no longer required. QML (Sec. 3) does not include an explicit "destroy message" primitive. Instead, the execution engine only marks whether a message has been processed or not. This way, physical cleanup is decoupled from message processing and can be done separately, for example in times of low system load or when the remaining storage capacity becomes low.

It turns out that the slicing concept is ideally suited to identify those messages that are still required by the application logic, because

1. Slices are specified declaratively
2. Slices by design represent contexts in which messages are useful
3. A message may belong to any number of slices

This is why we chose to couple membership in slices to message retention. The Demaq execution model guarantees that a message is not physically removed from the message store as long as it is contained in at least one slice. By resetting slices (Sec. 2.3.2), applications can indicate that certain "old" messages are no longer interesting with respect to that slice. Once all slices to which a message belongs have been reset, it is eventually removed by the system. Messages which are not part of any slice may be deleted for the message store as soon as it has been processed.

## 3. QUEUE MANIPULATION LANGUAGE

The Queue Definition Language introduced in the last section allows the specification of the queue and slicing infrastructure used by an Active Web application. To implement the application logic, it has to be complemented by a convenient programming language. For this purpose, current application servers [2] successfully rely on imperative, object-oriented programming languages such as Java, C#, or Visual Basic. As these languages do not incorporate XML as a

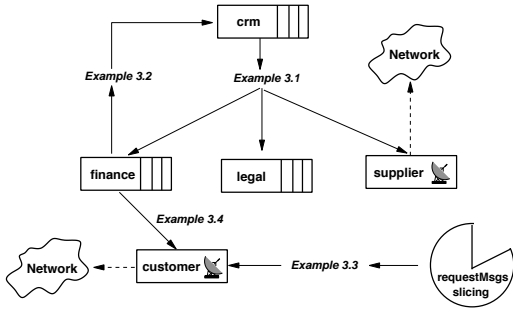


Figure 4: Procurement scenario message flow

first class data type, auxiliary processing steps are required to convert between the type systems of those languages and the XML format, thus harming the overall system performance. Recent efforts, such as Microsoft’s LINQ project [26] or XJ [22], try to overcome this impedance mismatch. However, even if XML can be successfully integrated as a first class data type, other disadvantages persist. For example, the optimization potential of imperative languages is far lower than that of declarative languages. Further, it is generally agreed upon that the productivity of programmers is higher for declarative languages than for imperative ones.

To avoid these drawbacks, we choose a declarative language providing native XML support as the basis of our application language. Our Queue Manipulation Language QML is built on the concept of event-condition-action (ECA) rules that react to a single kind of event, the arrival of an XML message in a queue. Each QML rule is essentially an XQuery Update Facility expression [10] attached to a queue. Within this section, we first describe the execution model that explains how and when rules are evaluated, before briefly recapitulating the features of the XQuery Update Facility. In the remainder of this section, we develop our QML by implementing parts of an exemplary business process (depicted in Fig. 3). This process is a distributed procurement scenario taken from the chemical industry, where multiple parties, both within the same organizational unit and on external systems, form a processing network. We provide QML code for some of the steps in the scenario, creating the message flow shown in Fig. 4.

### 3.1 Execution Model

Following the terminology proposed by Paton and Diaz [29], our model applies an iterative cycle policy, relying on a detached coupling mode that decouples the processing of a message from its creation. At any given point in time, there may be any number of messages in a node’s queues that have not been processed yet. Each unprocessed message is processed exactly once, in an order determined by a message scheduler. The scheduler is influenced by optional priorities declared for the involved queues.

The processing of a message consists of the evaluation of all rules that pertain to the queue in which the message resides. The evaluation of each rule results in a (possibly empty) list of pending actions. The resulting actions are state-updating primitives, with the most frequent action being the creation of a new message and its insertion into another queue. This list of actions is then executed, and any created messages are made known to the scheduler. The

evaluation of all rules and the subsequent execution of all actions caused by processing a single message are executed in a single transaction against the message store. Many of such message-processing transactions may run concurrently to improve performance, as long as they can be executed in an isolated manner. The separation of rule evaluation from action execution, together with the transaction mapping, ensure a snapshot semantics that facilitates optimization.

### 3.2 XQuery Update Facility

The XQuery Update Facility [10] is intended to allow a declarative specification of updates in XML data stores. The bulk of the proposed update language is made up by XQuery 1.0. In addition, new primitives (do statements) are introduced which can be used similar to constructors to represent pending intra-document updates. Expressions which return such pending updates are called “updating expressions” and can be combined using existing XQuery constructs such as FLWOR expressions. Updating expressions produce a pending update list of update primitives that are applied after the entire statement has been evaluated, thus resulting in a snapshot semantics for expression evaluation.

Using the XQuery Update Facility as the basis for QML has several advantages:

1. Application developers can benefit from previous programming experience with XQuery.
2. Obviously, the XQuery language is well equipped to process XML data and to construct new XML fragments/messages.
3. The implementation of Demaq becomes easier, as we can reuse existing XQuery implementations.

### 3.3 Rule Creation

The top-level construct in QML is a rule definition. Each rule has a name (RName) and associates an updating XQuery Update expression with a physical message queue or a slicing (QName).

```
create rule RName for QName CondExpr
```

The body of the rule is always a conditional expression (hence the CondExpr nonterminal) to facilitate the detection and optimization of conditions by the rule compiler. The CondExpr must always be an updating expression, making use of the novel queue do primitives explained below. For programming convenience, we allow the “else” part of the CondExpr to be absent and assume that such a rule produces an empty update list in the else case.

### 3.4 Message Queue Primitives

The result of a rule is a list of pending actions, as explained above. The most important action resulting from a rule is the creation of a new message and its insertion into a particular queue. To perform this operation, we extend the list of XQuery update’s expressions with a new enqueue update primitive

```
do enqueue ExprSingle into QName
  (with PropName value ExprSingle)*
```

which causes a message to be enqueued to the specified queue. The optional with clause allows to explicitly set properties of the new message (see Sec. 2.2).

```

create rule newOfferRequest for crm
if (//offerRequest) then
  let $customerInfo :=
    <requestCustomerInfo>
      {//requestID} {//customerID}
    </requestCustomerInfo>
  let $exportRestrictionInfo := ...
  let $plantCapacityInfo := ...
  return do enqueue $customerInfo into finance,
    do enqueue $exportRestrictionsInfo into legal,
    do enqueue $plantCapacityInfo into supplier
    with Sender value "http://ws.chem.invalid/"

```

Figure 5: Message handling and content access

**Example 3.1:** The QML rule in Fig. 5 demonstrates how basic message handling and parallelism are performed as a response to the reception of a new customer request at the customer relationship management (crm) queue of our running example (Fig. 3). It initiates three subsequent checks by sending messages to other queues.

The default evaluation context of all XQuery and XPath statements in a QML rule is the document root of the triggering message, thus “//offerRequest” matches all offerRequest elements in the incoming message. In this example, we create the content of three new XML messages using `let`, including the initial request ID and customer ID for message correlation. As depicted by Fig. 4, these messages are sent to the “finance”, “legal” and “supplier” queues using the `enqueue` update action, forking the control flow. To allow message correlation by the supplier’s service, we add the “Sender” property field of the corresponding message using the `with-value` statement. This metadata information is automatically interpreted by Demaq’s communication subsystem.

The QML features a small library of functions (designated by the namespace prefix `qs:`) to access messages and queues from QML rules. The document node of the currently processed message is returned by `qs:message()`. Access to the document nodes of all messages in a particular queue is provided by `qs:queue(name)`. Message properties can be obtained using the `qs:property(pname)` function, returning the value associated with the “pname” key.

**Example 3.2** The rule in Fig. 6 demonstrates how to formulate predicates which involve both the current message and other messages in a particular queue. To determine the customers credit rating, the “invoices” queue is inspected to find potentially unpaid bills. The messages in the invoices queue are accessed using the `qs:queue()` function. To access the content of the triggering message, `qs:message()` can be used (e.g. for correlating the contained customerIDs in the predicate check).

## 3.5 Slice Primitives

### 3.5.1 Slice Rules

Rules can be attached to slicings using the same syntax as for queues. Note that a slicing specifies many “virtual queues” (slices), and the rule is attached to every slice of the specified slicing.

### 3.5.2 Slice Access

Like queues, slices are made accessible through additional XQuery functions. The `qs:slice()` function returns all

```

create rule checkCreditRating for finance
if (//requestCustomerInfo) then
  let $result :=
    <customerInfoResult> {//requestID} {//customerID}
    {let $invoices := qs:queue("invoices")}
  return
    if ($invoices[//customerID = qs:message()/customerID])
    then
      <refuse/> (:unpaid bills!:)
    else
      <accept/>}
    </customerInfoResult>
  return do enqueue $result into crm

```

Figure 6: Queue access

```

create property requestID as xs:string fixed
queue crm, customer value //requestID

create slicing requestMsgs on requestID

create rule joinOrder for requestMsgs
if (qs:slice()[/customerInfoResult] and
  qs:slice()[/restrictionsResult] and
  qs:slice()[/capacityResult]) then
  if (qs:slice()[/customerInfoResult/accept] and
    not (qs:slice()[/restrictionsResult/restrictedItem])
    and qs:slice()[/capacityResult/accept]) then
    let $request := qs:queue("crm")/offerRequest
    let $items:= $request[//requestID = qs:slicekey()]/items
    let $pricelist := collection("crm")[/pricelist]
    let $offer := ...
    return do enqueue $offer into customer
  else (:problems:)
    do enqueue <refusal>{//requestID}</refusal>
    into customer

```

Figure 7: Control flow synchronization

messages from the slice of the current message. The key (property value) of the current slice can be retrieved using the `qs:slicekey()` function. Both of these functions are only available to rules defined on slicings, so that they are not ambiguous for messages belonging to more than one slice.

**Example 3.3** In our business process (depicted in Fig. 3), the decision whether to send or refuse an offer depends on the results of three preceding checks (credit rating, export restrictions and plant capacity), which may run in parallel. In this example, we use a slicing to join the control flow of the parallel checks before processing continues (Fig. 7). It includes all messages in the crm and customer queues which refer to the given requestID.

The rule in Fig. 7 checks for the arrival of a message in the slicing and — if all three preceding checks have been performed — completes the order request by sending a reply to the customer. The `qs:slice()` function is used to acquire the confirmation messages. The `qs:slicekey()` function retrieves the slice key of the current slice for message correlation with the customer’s offer request. Master data (such as price lists) stored in the non-messaging parts of Demaq is acquired using the standard XQuery `collection()` function.

### 3.5.3 Slice Resets and Message Retention

To indicate that the messages in a slice are no longer needed, Demaq QML provides a `reset` update primitive that resets a slice specified by a slicing name and a slice key. (If no parameters are given, it resets the slice of the current

message with respect to the slicing to which the current rule is defined.)

```
create rule cleanupRequest for requestMsgs
  if (qs:slice()/offer or qs:slice()/refusal) then
    do reset
```

**Figure 8: Resetting a slice**

In the example above, messages of the requestMsgs slice are visible until an offer or a refusal message with the slice-specific key is finally sent, which completes processing for this requestID. This causes the "cleanupRequest" rule to reset the current slice (Fig. 8). Hence, as far as these rules are concerned, the messages may be deleted after an order request has been processed completely. However, there may be other slices which cause the messages to be retained for longer. Further, note that the slice reset is specified in a separate rule, which causes a reset of the slice, no matter which rule caused an offer or a refusal to be created.

When receiving an order, a number of subsequent steps is preformed, including sending order messages to external suppliers, arranging shipment and sending an invoice to the customer until the business process is successfully terminated by retrieving the payment (Fig. 3). We skip these parts of the process, as they do not provide any additional insight into QML. However, if the payment has not been received within a particular grace period, a reminder has to be sent to the customer.

**Example 3.4** The code snippet in Fig. 9 shows another example how slicings can be applied to make sure messages are retained. Here, a QML rule monitors the reception of the timeout notification message previously registered at an echo queue (when sending the invoice to the customer). If no payment has been received upon expiration of the timeout, it sends a reminder message to the customer. A slicing is used to make sure both invoice and payment confirmation are retained until the timeout message is received. If the timeout message arrives and the payment has been confirmed, the slice is refreshed by the "resetPayedInvoices" rule.

### 3.6 Error Handling

An important aspect of any computer program is its reaction to faults. As the Demaq engine is supposed to run

```
create property messageRequestID as xs:string fixed
  queue invoices, finance value //requestID

create slicing invoiceRetention on messageRequestID

create rule resetPayedInvoices for invoiceRetention
if(qs:slice()//timeoutNotification
  and qs:slice()/paymentConfirmation) then
do reset

create rule checkPayment for finance
if (//timeoutNotification) then
  let $mRID := qs:message()//requestID
  let $payments := qs:queue()[/paymentConfirmation]
  return
  if(not($payments[/requestID = mRID])) then
    let $invoice:=qs:queue("invoices")[/requestID = mRID]
    let $reminder := (:access initial invoice:) ...
    return do enqueue $reminder into customer
  else ()
```

**Figure 9: Message retention**

permanently to guarantee high service availability, it must be equipped with powerful error handling facilities. In this section, we review some sources of errors, and illustrate how they can be handled in Demaq.

**Application program related** Some errors are caused by the application program itself. While syntactical errors or wrong static typing can be detected at compile time and can be handled while developing the application, there are also many application-related runtime errors. For example, as we use XQuery in our rule specifications, processing might raise one of the various runtime errors defined by the XQuery standard, which are mainly related to dynamic typing issues.

**Message related** Message related errors may occur when trying to enqueue invalid XML documents received from remote peers into a gateway queue. For example, input documents may be truncated or not well-formed, thus resulting in parsing errors during processing, or rules create messages whose schema is incompatible with the target queue's schema.

**Network related** Demaq provides application developers with a queue-based interface for sending messages over the network by simply enqueueing them into a corresponding gateway queue. Unfortunately, the existence of the network cannot be made completely transparent to application programs. Interactions with remote transport endpoints may encounter a variety of network-related issues [33]. Among these are low-level network problems such as temporal or permanent unavailability of remote transport endpoints, name resolution failures, timeouts or routing errors. Further up the protocol stack, there may be other sources of problems. For example, using the WS-Security SOAP enhancements [4] may result in encountering invalid certificates, wrong signatures or decryption failures.

Some of those errors can be resolved by the communication subsystem (message delivery can be automatically retried etc). However, in many cases, application programs must handle such errors explicitly.

**System** Another source of errors is the Demaq processing system itself. System failures may occur due to insufficient system resources (such as main memory or secondary storage), infrastructure problems (e.g. in the underlying database or operating system) or even hardware defects.

To deal with these various kinds of errors, corresponding error handling facilities have to be provided for application developers. BPEL [3], XL [17] and many other programming languages (including e.g. Java and C++) allow the specification of scoped exception handlers for those parts of the program that might potentially fail. Extending our expression language XQuery with exception handling would jeopardize most of the benefits discussed in Sec. 3.2, such as reusing existing XQuery implementations and risk incompatibility with future versions of XQuery, which might incorporate similar mechanisms.

Instead, like all other events in the Demaq system, errors are represented by *XML messages* sent to *error queues*. If an error is encountered during processing, a corresponding



failure message is inserted into an error queue. The error message not only contains an error specification according to a predefined schema, but may also contain (a reference to) the data which caused the error, such as message IDs or corrupt incoming message bodies. Different error queues can be specified at the rule, queue, module and system level.

This way, error handling is integrated seamlessly with our message and queue-based programming paradigm, reflecting the fact that in many cases, the border between regular application logic and error handling is quite fuzzy. Further, we can perform advanced error handling by reusing our regular primitives. For example, error queues may be gateway queues, notifying remote operators. Error queues may be persistent, guaranteeing eventual reaction to an error even in the case of masking higher level (e.g. system) failures.

**Example 3.5** The example in Fig. 10 shows how error handling can be done by a Demaq application. When receiving a customerOrder request, the application rule tries to send back a confirmation message to the customer. All errors that might be caused by the confirmOrder rule are handled by the crmErrors queue. In this example, an error handling rule (deadLink) tracks all communication failures caused by disconnected transport endpoints. It compensates for the network failures by sending a mail confirmation using a corresponding Web Service (connected by the postalService gateway queue).

```

create queue crmErrors kind basic mode persistent
create property orderID as xs:integer
  queue crm value //customerOrder/orderID
create slicing retainOrders on orderID

create rule confirmOrder for crm errorqueue crmErrors
if(//customerOrder) then (:send confirmation:)
let $confirmation := <confirmation>
    {/orderID} (:additional details:)
    </confirmation>
return do enqueue $confirmation into customer

create rule deadLink for crmErrors
if (/error/disconnectedTransport) then
(:send confirmation via snail mail:)
let $orders := qs:queue("crm")//customerOrders
let $initialOrderID := /error/initialMessage//orderID
let $address := $orders[orderID=$initialOrderID]/address
let $request := <sendMessage>{$address}
    {/initialMessage}</sendMessage>
return do enqueue $requestMail into postalService

```

Figure 10: Error handling

## 4. IMPLEMENTATION ASPECTS

Within this section, we outline some aspects of the ongoing implementation of Demaq and discuss how certain aspects of the semantics of our declarative language can be used to optimize execution performance<sup>1</sup>.

### 4.1 Transactional Queues

Message-oriented middleware solutions successfully rely on transactional queues. Due to their functional overlap with typical database features such as recovery and security, it has been argued that queues should be integrated

<sup>1</sup>Additional information about the Demaq project is available at <http://www.demaq.net/>

into database systems [20]. Many commercial database vendors have considered incorporating queues into their products [15] or already support message queues as native data structures [19, 34].

We believe that a queue-enabled XML data store is the most suitable foundation for the storage subsystem of an active XML message processing system such as Demaq. The current implementation of the Demaq message store is built on the foundation of Natix [16], a native XML data store that is available as a C++ library. While Natix allows for the efficient, reliable and persistent storage of XML fragments, we had to extend the existing collection-based storage and recovery subsystems with recoverable queues for XML message storage<sup>2</sup>. Since the XML queues and the XML collections have similar storage formats, we can leverage the Natix run-time system for rule execution. This includes the Natix virtual machine for query evaluation, the recovery and locking subsystems as well as the schema management components.

Having a full-fledged XDS in source form, we can also apply existing database and transaction processing research to message processing. For example, our append-only approach for message queues simplifies logging and recovery because there are fewer in-place updates. Further, our declarative mechanism for specifying message retention (Sec. 2.3.3) frees the system from the need to fully log message deletions – after a crash, the decision to delete certain messages can be reached without analyzing the log.

However, Natix is not the only option as underlying message store. The Demaq design is highly modular and could also be implemented on top of other existing, queue-enabled database systems, such as the Microsoft SQL Server Service Broker (MSSSB) [34]. MSSSB includes some of the necessary features, such as data retention and security, and even incorporates queue-based system facilities closely related to our gateway and echo queues. While MSSSB already allows to create messaging-based applications, it uses the TSQL programming language, which is imperative at the top level and requires much tedious glue code to work with XML data. The "activation" service that can be used to automatically run programs on message arrival does not include declarative conditions and hence complicates automatic optimizations. However, it could be used to trigger Demaq's rule processing and scheduling.

### 4.2 Gateway Queues

To interface with remote Web Services, Demaq includes a communication subsystem, offering both synchronous and asynchronous communication channels to application rules in form of gateway queues. For synchronous calls, system properties are used to correlate request and reply messages. Demaq provides SOAP bindings to transport protocols such as HTTP and SMTP and the underlying TCP/IP client-server functionality.

### 4.3 Slicing

While slicing can be implemented by merging the slice definition into the rules (see below), this would require to evaluate a complex query for every incoming message. Instead, similar to the materialized views concept in RDBMSs, it is

<sup>2</sup>The queue extensions (but not yet the Demaq Rule Engine) are included in Natix V2 available at <http://db.informatik.uni-mannheim.de/natix.html>

possible to maintain a physical representation of the slices, for example using a B-Tree indexed by the slice key.

Slices also present an opportunity for improving concurrency, as they form a natural new granularity, coarser than messages, but orthogonal to queues. By locking just the affected slices, full serializability of the individual message-processing transactions can be guaranteed without locking whole queues.

## 4.4 Rule Processing

The rule-processing module of Demaq is responsible for executing the application logic defined by QML rules. Its main building blocks are a rule compiler and a scheduling component enforcing our execution model.

### 4.4.1 Rule Compiler

On deployment of an application, the rule compiler is used to compile the application's rule set into execution plans. Essentially, rule evaluation is a query against the state of the underlying storage engine that results in an update list. Hence, we can reuse execution plans and optimization techniques for XML query processing to perform rule evaluation.

For each queue, the compiler collects all rules that are associated with it. The bodies of the rules represent XQuery Update expressions, which are rewritten. Rewriting includes supplying default parameters to functions which depend on the current queue (such as `qs:queue()`). Similar to conventional view merging, fixed properties (see Sec. 2.2) are inlined, as is slice access that is not materialized (see above). After rewriting, the rule bodies are combined into a single query by concatenating all pending actions into a single sequence. The query is then compiled into an execution plan that is executed every time a message arrives in that queue. A variety of existing techniques can be leveraged to improve processing performance, including XML filtering [14], efficient expression evaluation [35], and template folding [23].

The technique outlined above creates a "canonical" execution plan as a starting point. We intend to exploit the fully declarative nature of our language by performing cost-based optimization by rewriting rule sets into equivalent, but more efficient ones.

### 4.4.2 Scheduler

Demaq's scheduling component implements the execution model introduced in Sec 3.1. The scheduler maintains a list of all unprocessed messages and chooses the next message to be handled, considering both their temporal ordering and the priority of the containing queues. Thus, a message in a high priority queue may be processed before another one stored in a queue with a lower priority, even if it has been created more recently.

The scheduler also orchestrates background tasks, such as gateway queue processing and the message garbage collection for messages that do not have to be retained.

## 5. CONCLUSION

This paper discusses the Demaq approach for declarative XML message processing. Demaq may be used to specify the behavior of nodes in a variety of distributed application scenarios, including, but not limited to Web Service implementation and orchestration. The major feature of Demaq is a fully declarative language that is based on XQuery and has a simple semantics which facilitates optimization.

While implementing the Demaq execution model on top of a queue-enabled DBMS such as our native XML data store Natix [16], we found that we can benefit from the application of many existing techniques for transaction processing and declarative query processing to message processing.

Much remains to be done. For example, time is an important aspect for Active Web applications. While our ordered queue model implies some relationship of messages with respect to time, and we have mentioned time-based echo queues in Sec.2.1.3, we have not explained in detail how time-based conditions are incorporated into our language, and how they are evaluated. Further, Demaq applications currently rely on a static set of queues, slicings, and rule definitions that cannot be adapted during system runtime. As a result, each time an application evolves, the processing system has to be shut down and restarted. Clearly, this is unacceptable for zero-downtime environments, bringing up the question how to allow for dynamic queue and rule evolution, while still guaranteeing correct and reasonable system behavior.

*Acknowledgments.* We thank the anonymous referees for their helpful hints on improving this paper. We also thank Simone Seeger and Matthias Brantner for their comments on the manuscript.

## 6. REFERENCES

- [1] Serge Abiteboul, Bernd Amann, Sophie Cluet, Adi Eyal, Laurent Mignet, and Tova Milo. Active views for electronic commerce. In *VLDB*, pages 138–149, 1999.
- [2] Gustavo Alonso, Fabio Casati, Harumi Kuno, and Vijay Machiraju. *Web Services: Concepts, Architectures and Applications*. Springer-Verlag, 2004.
- [3] Tony Andrews et al. Business process execution language for web services version 1.1. Technical report, 2003. <http://www.ibm.com/developerworks/library/ws-bpel>.
- [4] Bob Atkinson et al. Web services security (WS-Security). Technical report, 2002. <http://www.ibm.com/developerworks/library/ws-secure/>.
- [5] James Bailey et al. Flavours of XChange, a rule-based reactive language for the (semantic) web. In *RuleML*, pages 187–192, 2005.
- [6] Ruslan Bilorusets et al. Web services reliable messaging protocol (WS-ReliableMessaging). Technical report, 2005. <http://www.ibm.com/developerworks/library/ws-rm/>.
- [7] Stany Blanvalet. Managing a BPEL production environment. Technical report, Oracle Corporation, 2006. [http://www.oracle.com/technology/pub/articles/bpel\\_cookbook/blanvalet.html](http://www.oracle.com/technology/pub/articles/bpel_cookbook/blanvalet.html).
- [8] S. Boag, D. Chamberlin, M.F. Fernandez, D. Florescu, J. Robie, and J. Siméon. XQuery 1.0: An XML query language. Technical report, World Wide Web Consortium, November 2005. W3C Candidate Recommendation.
- [9] Angela Bonifati, Stefano Ceri, and Stefano Paraboschi. Pushing reactive services to xml repositories using active rules. *Computer Networks*, 39(5):645–660, 2002.
- [10] Don Chamberlin, Daniela Florescu, and Jonathan

- Robie. XQuery update facility. Technical report, World Wide Web Consortium, May 2006. W3C Working Draft.
- [11] Dominic Cooney, Marlon Dumas, and Paul Roe. A programming language for web service development. In *ACSC*, pages 143–150, 2005.
- [12] International Press Telecommunications Council. News architecture (nar) for g2-standards. <http://www.iptc.org/NAR/>, 2006.
- [13] Alin Deutsch, Liying Sui, Victor Vianu, and Dayou Zhou. Verification of communicating data-driven web services. In *PODS*, pages 90–99, 2006.
- [14] Yanlei Diao and Michael J. Franklin. Query processing for high-volume XML message brokering. In *VLDB*, pages 261–272, 2003.
- [15] Sangeeta Doraiswamy et al. Reweaving the tapestry: Integrating database and messaging systems in the wake of new middleware technologies. In *Data Management in a Connected World*, pages 91–110, 2005.
- [16] Thorsten Fiebig, Sven Helmer, Carl-Christian Kanne, Guido Moerkotte, Julia Neumann, Robert Schiele, and Till Westmann. Anatomy of a Native XML base management system. *VLDB Journal*, 11(4):292–314, 2003.
- [17] Daniela Florescu, Andreas Grünhagen, and Donald Kossman. XL: a platform for web services. In *CIDR*, 2003.
- [18] Jesse James Garrett. Ajax: A new approach to web applications. Technical report, Adaptive Path, February 2005. <http://www.adaptivepath.com/publications/essays/archives/000385.php>.
- [19] Dieter Gawlick and Shailendra Mishra. Information sharing with the Oracle database. In *DEBS*, 2003.
- [20] Jim Gray. Queues are databases. In *Proceedings 7th High Performance Transaction Processing Workshop. Asilomar CA, Sept 1995.*, 1995.
- [21] Martin Gudgin, Marc Hadley, Noah Mendelsohn, Jean-Jacques Moreau, and Henrik Frystyk Nielsen. SOAP version 1.2. Technical report, The World Wide Web Consortium (W3C), 2003.
- [22] Matthew Harren, Mukund Raghavachari, Oded Shmueli, Michael G. Burke, Rajesh Bordawekar, Igor Pechtchanski, and Vivek Sarkar. XJ: facilitating XML processing in Java. In *WWW*, pages 278–287, 2005.
- [23] Carl-Christian Kanne and Guido Moerkotte. Template folding for XPath. In *Third International Workshop on XQuery Implementation, Experience and Perspectives (XIME-P 2006)*, 2006.
- [24] Boon Thau Loo, Tyson Condie, Minos N. Garofalakis, David E. Gay, Joseph M. Hellerstein, Petros Maniatis, Raghu Ramakrishnan, Timothy Roscoe, and Ion Stoica. Declarative networking: language, execution and optimization. In *SIGMOD Conference*, pages 97–108, 2006.
- [25] FIX Protocol Ltd. Financial information exchange (fix) protocol. <http://www.fixprotocol.org/>, 2006.
- [26] Erik Meijer, Brian Beckman, and Gavin M. Bierman. LINQ: reconciling object, relations and xml in the .net framework. In *SIGMOD Conference*, page 706, 2006.
- [27] Mark Nottingham and Robert Sayre. The atom syndication format. Technical Report RFC4287, The Internet Engineering Task Force, December 2005.
- [28] Nicola Onose and Jérôme Siméon. XQuery at your web service. In *WWW*, pages 603–611, 2004.
- [29] Norman W. Paton and Oscar Díaz. Active database systems. *ACM Comput. Surv.*, 31(1):63–103, 1999.
- [30] Michael Stonebraker. Too much middleware. *SIGMOD Rec.*, 31(1):97–106, 2002.
- [31] Henry S. Thompson, David Beech, Murray Maloney, and Noah Mendelsohn. XML schema part 1: Structures. Technical report, World Wide Web Consortium (W3C), May 2001.
- [32] Motomichi Toyama. Parameterized view definition and recursive relations. In *Proceedings of the Second International Conference on Data Engineering, February 5-7, 1986, Los Angeles, California, USA*, pages 707–712. IEEE Computer Society, 1986.
- [33] Jim Waldo, Geoff Wyant, Ann Wollrath, and Samuel C. Kendall. A note on distributed computing. In *Mobile Object Systems*, pages 49–64, 1996.
- [34] Roger Wolter. An introduction to SQL server service broker. Technical report, Microsoft, 2005.
- [35] Aravind Yalamanchi, Jagannathan Srinivasan, and Dieter Gawlick. Managing expressions as data in relational database systems. In *CIDR*, 2003.